

"The Garden" by J.M.W. Turner

Post by "Joshua" of March 5, 2021 at 6:49 PM



I had not heard of this work before. It was done as an illustration for Thomas Moore's "The Epicurean". Coming from a pre-eminent English painter remembered for his haunting portrayals of the force, power, and grandeur of Nature, this piece strikes me as an uncharacteristic nod to the balance of classical harmonies. I have not read this book, but I do mention it [Here](#).

When we studied Turner in college as part of British Romanticism, it was his nautical paintings we looked at. You can find a gallery representative of his work on the [Wikipedia page](#).

Post by "Joshua" of March 5, 2021 at 6:54 PM



And if you're not familiar with the painter, this should give some hint as to his legacy!

Post by “Don” of March 5, 2021 at 7:18 PM

LOL! That's the painting I put on my account page here at the forum! All I knew was that it was called (where I found it) The Philosopher's Garden. I wasn't even sure if it was Epicurean. And I didn't delve into the artist.

Thanks for posting this!!

Post by “Joshua” of March 5, 2021 at 7:23 PM

Ha! I suspected someone here must have seen it already. I don't spend much time on the fine-art side of things.

Post by “Cassius” of March 5, 2021 at 7:46 PM

Looks like the picture is not showing up in Joshua's post. Joshua do you know what's wrong?

Post by “Joshua” of March 5, 2021 at 7:49 PM

Hmmm...it shows up for me, but when I switch to Incognito mode I just get a bad link. I'll try to edit the post and see what happens.

Post by “Joshua” of March 5, 2021 at 7:52 PM

That work?

Post by “Don” of March 5, 2021 at 8:06 PM

Oh! Mea culpa! That's a different one than I found and put on my account.

The painting on my account is [Antal Strohmayer](#), The Philosophers Garden, Athens, 1834.

I may have to change that now.

Post by “Cassius” of March 5, 2021 at 9:19 PM

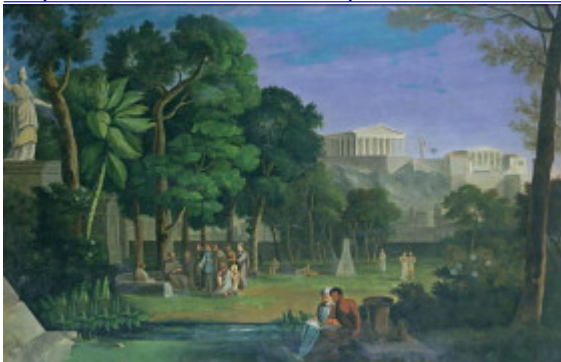
Yes that is working now - thanks! And Don I went to your profile to look at that one but it looks like all one can see is a part of it on the profile, so maybe post a full copy somewhere(?)

Post by “Don” of March 5, 2021 at 9:47 PM

[Quote from Cassius](#)

Don I went to your profile to look at that one but it looks like all one can see is a part of it on the profile, so maybe post a full copy somewhere(?)

<https://chilonas.files.wordpress.com/2015/11/painting1.jpg>



Post by “Cassius” of March 5, 2021 at 11:55 PM

<https://www.epicureanfriends.com/thread/1909-the-garden-by-j-m-w-turner/>

different style but very nice too! Very similar subject.

Post by “Godfrey” of March 6, 2021 at 3:01 AM

I never would have guessed that's by Turner! He's definitely considered one of the greats. Here's a little blurb on the picture and the artist with some other examples of his work:

<https://www.artsy.net/artwork/j-m-w-...s-the-epicurean>